

BOOK AND LYRICS BY  
Quiara Alegria Hudes

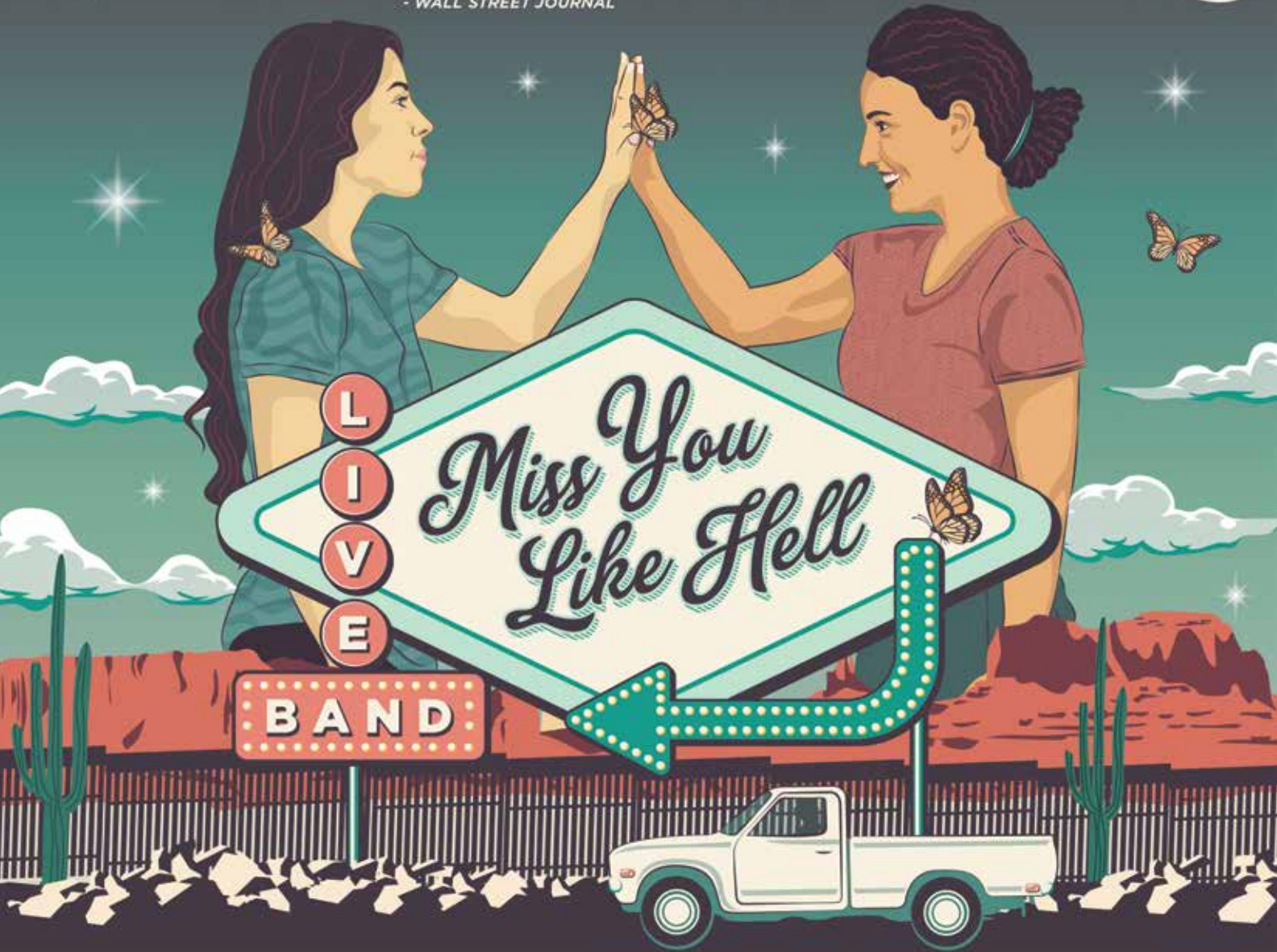
MUSIC AND LYRICS BY  
Erin McKeown

DIRECTED BY  
Esteban Arévalo Ibáñez

2

*“The Best Musical of The Year”*

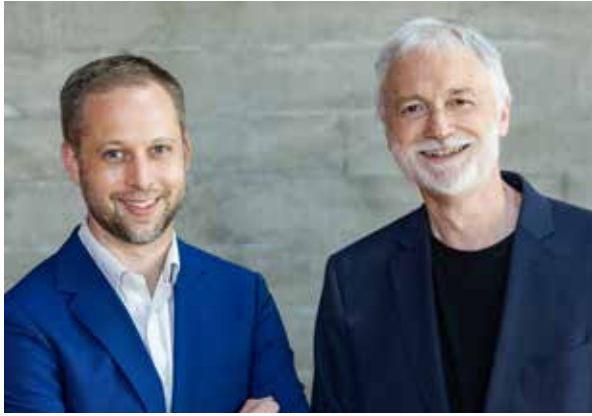
- WALL STREET JOURNAL



LEAD SHOW SPONSOR: Margaret & Dick Rutherford

SHOW SPONSORS: Denise & Hershey Garner, Ellis & Kay Melton, and Bob & Diane Shaw





Dear friends,

How often do we ask each other, “How’re you feeling?”, knowing full well how hard it is to describe an emotion?

For example, what does joy really feel like?

Hard to say. Often we try to describe it with other emotions. “Gleeful.” “Happy.” “You know it when you feel it.”

It may be tough to describe joy, but as we roll out TheatreSquared Season 17, there’s one thing we can say: you’re about to see a whole lot of it on our stages.

Join us. Walk over to the box office and sign up today. When the new season launches and you’re in the best seats in the house, you won’t have to put joy into words. You’ll be feeling it.

Sincerely,

**Martin Miller,**  
*Executive Director*

**Robert Ford,**  
*Artistic Director*

**ROBERT FORD** (*Artistic Director*) is an award-winning playwright, novelist & musician who helped found TheatreSquared in 2005, where he has co-produced 75 plays and musicals and facilitated the development of over 55 new works. The past season features his play *My Father’s War*, which premiered at T2 in 2008. With Amy Herzberg, he co-adapted two versions of *A Christmas Carol* for T2. T2 has produced several of his plays, including *Fault*, *The Spiritualist*, *The Fall of the House* (also Alabama Shakespeare Festival—Edgar Award nominee), *Look Away*, *’Twas the Night*, and adaptations of *Great Expectations* and *It’s a Wonderful Life*. His critically acclaimed first novel, *The Student Conductor*, was a Barnes & Noble Discover Great New Writers pick. He holds a M.Mus. degree from Yale and M.F.A.’s in acting from Rutgers and in playwriting & screenwriting from the University of Texas at Austin.

**MARTIN MILLER** (*Executive Director/Producer*) joined T2 in 2009, and has since produced more than 100 plays and developmental works, grown the theatre’s annual budget from \$160K to \$7M, and expanded its audience twentyfold. He managed the design, construction and fundraising for T2’s new 50,000-square-foot theatre center. He established the National Stages Program, a consortium of theatres offering reciprocal member benefits, and has served as a panelist for the National Endowment for the Arts and Theatre Communications Group. As associate producer for Chicago Shakespeare Theater, he oversaw many projects including commissioning the bilingual *Romeo y Juliet* from Karen Zacarias, as well as tours and transfers of works by the Second City and Q Brothers. He holds a B.A. from Carleton College and M.F.A. in Arts Leadership from The Theatre School, DePaul.

## CREATIVE

ESTEBAN ARÉVALO IBÁÑEZ  
JASON BURROW  
MICHELLE LEBLANC  
ROBIN VEST ^  
YAO CHEN ^  
ATHZIRI MORALES  
REBECCA KESSIN ^  
NATHAN W. SCHEUER ^  
BRODIE JASCH  
EMELY ZEPEDA\*

Director  
Music Director  
Choreographer  
Scenic Design  
Costume Design  
Lighting Design  
Sound Design  
Projection Design  
Props Manager  
Production Stage Manager

## CAST

JANYCE CARABALLO\*  
TRENT ANDERS DAHLIN  
HAYLEIGH HART FRANKLIN  
BRYCE KEMPH  
FRANCISCA MUÑOZ\*  
LEE PALMER\*  
JL REY\*  
K CHINTHANA SOTAKOUN  
KYLIE GROOM STACY

Olivia  
Ensemble - Officer  
Pearl  
Higgins  
Beatriz  
Mo  
Manuel  
Ensemble - Lawyer  
Ensemble - Legal Clerk

## ADDITIONAL CREATIVES

LISA AUTEN  
ANA MUÑOZ

Associate Music Director  
Assistant Stage Manager

## UNDERSTUDIES

TRENT DAHLIN  
(*Mo & Higgins Understudy*)  
KYLIE GROOM STACY  
(*Ensemble - Lawyer Understudy*)  
LUKE BRIDGES  
(*Ensemble - Officer Understudy*)  
STEPHANIE FREEMAN  
(*Ensemble - Legal Clerk Understudy*)

ALEX HORN  
(*Mo Stand-In*)  
ANNA JOIE  
(*Pearl Understudy*)  
ANA MIRAMONTES  
(*Olivia & Beatriz Understudy*)

## ORCHESTRA

LISA AUTEN (*Piano/Conductor*), MATTHEW BEACH (*Bass*), GRACE CLARK (*Viola*),  
WILLIAM REYES (*Guitar*), CHRIS SCHERER (*Drums*), CHRISTIAN SERRANO (*Cello*),  
CRISTIAN MARTINEZ VEGA (*Violin*)

## TIME PERIOD

2014, the late Obama years

## SETTING

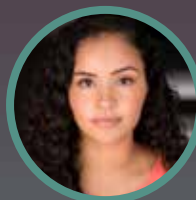
The United States of America

**RUN TIME:** 1 hour and 45 minutes, with one 15-minute intermission

*Miss You Like Hell* premiered at the La Jolla Playhouse on October 25, 2016.  
The production was directed by Lear deBessonet.



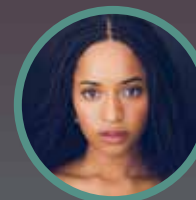
\* Member, Actors' Equity Association  
^ Member, United Scenic Artists, Local 829  
# Member, Stage Directors and  
Choreographers Society



Janyce Caraballo



Trent Anders  
Dahlin



Hayleigh Hart  
Franklin



Bryce Kempf



Francisca Muñoz



Lee Palmer



JL Rey



K Chinthana  
Sotakoun



Kylie Groom  
Stacy



**JANYCE CARABALLO** (Olivia) makes her TheatreSquared debut. Selected credits include work with: Teatro Vista, Raven Theatre, Chicago Children's Theatre, Theo Ubique, Emerald City Theatre. Regional: Indiana Repertory Theatre, American Players Theatre, Marriott Theatre, Paramount Theatre, and First Folio Theatre. TV/Commercial: Chicago PD, Discover Credit Card, Coors Light, Orbit Gum, ULTA Beauty, The Onion, Illinois Secretary of State PSA, 2026 FIFA World Cup. She is a graduate student (MFA Acting) at The Theatre School at DePaul University and is represented by Paonessa Talent Agency.

### TRENT ANDERS DAHLIN

(Ensemble - Officer) returns to T2 after appearing as both Bob Cratchit and Fred in *A Christmas Carol*. He has acted several seasons at the Tony-winning Utah Shakespeare Festival, at which he was recently seen as Feste in *Twelfth Night* and Prospero in their Educational Tour of *The Tempest*. His other favorite roles include Willoughby in *Sense and Sensibility*, Gould in *Grey Gardens*, Malcolm in *Macbeth* (Lyric Repertory Theatre), and John Wilkes Booth in *Assassins* (Southern Utah University). Trent also frequently works as a music director, composer, and musician for various professional theatres around the country.

### HAYLEIGH HART FRANKLIN

(Pearl) makes her TheatreSquared debut. Off Broadway, she recently appeared as Femi in *Bayano* (The National Black Theater). Her credits include Beatrice in *Shrewd Mechanicals* (The Shakespeare Theatre of New Jersey). She holds a BFA in Acting from SUNY Purchase.

**BRYCE KEMPH** (Higgins) returns to TheatreSquared having performed in 15 productions, most notably David O. Selznick in *Moonlight and Magnolias*, Ebenezer Scrooge in *A Christmas Carol*, and Mr. Wormwood in *Matilda*. Additional Credits include *Peter and the Starcatcher* (Arkansas Rep); *Lilly's Purple Plastic Purse*, *Go Dog Go*, *A Year With Frog and Toad* (Trike Theatre); *Twelfth Night* (Classical Edge); and *Man*

*of La Mancha* (Inspire). NYC credits include *Garage* (NYC Fringe Festival); *Superhero Celebrity Rehab the Musical* (Access Theatre); *Andromache* (Full of Noises); and *The Rivals* (Ampersand). Film credits include *Greater: The Brandon Burlsworth Story*, *Riot Act*, *No Exit*, *Mayfly*, *Neapolitan*, and *Waiting for Godot*. He holds a BFA in Theatre from Emporia State University, and an MFA in Acting from the University of Arkansas.

### FRANCISCA MUÑOZ

(Beatriz) returns to TheatreSquared after appearing in *Tiny Beautiful Things* and *American Mariachi*. Recent credits include Julia in *Somewhere Over The Border* (Syracuse Stage and Geva Theater). Off Broadway credits include Mrs. Delgado in *Felix Starro* (Theatre Row); Maria in *The Last Jew of Boyle Heights* (The Actors Temple Theatre). Other theatre credits include Arella/Natalie in *Informed Consent* (The Gable Stage) Katherine Wright in *Kitty Hawk* (The Adrienne Arsht Center for the Performing Arts); Frida Kahlo, Alfonsina Storni, Rufina Amaya in *Tres Vidas* (The Core Ensemble); June in *Chicago* (Boca Raton Theatre Guild). Television credits include Abuela in the Television special *Our Lady Lupe* (PBS); Med Tech in *FBI Most Wanted* (CBS), *Australian Idol* Finalist (Ten Networks AU). She holds a Bachelor of Music (Performance, Theatre, Composition) from Western Sydney University, Australia and is reped by Take 3 Talent.

**LEE PALMER** (Mo) makes his TheatreSquared debut. A veteran actor whose career has taken him all over the map, Lee most recently appeared as the Narrator in *Passing Strange* (Salt Lake Acting Company). Other select credits include *Jitney* (Congo Square Theatre -Jeff Award nomination, Black Excellence Award winner); *Two Trains Running* (Goodman Theatre); *The Full Monty*, *Newsies*, *Once on this Island* (Skylight Music Theatre); *The Whipping Man* (Fulton Theatre); *A Murder is Announced*, *Ghost The Musical* (Peninsula Players); *Julius Caesar*, *Taming of the Shrew*, *The Seagull* (Michigan Shakespeare Festival); *To Kill a Mockingbird*, *Williams & Walker*, *Psychedelic Sundae*, *Benito Cereno* (Milwaukee Repertory

Theater); *Race, microcrisis, Perfect Mendacity*, *The Exonerated* (Next Act Theatre); *A Christmas Carol* (Actors Theatre of Louisville); and *Five Guys Named Moe* (Tour and Mill Mountain Theatre). Primetime television: *Empire* (FOX) and *Chicago Fire* (NBC). Feature films: *Small Town Wisconsin*, *Olympia*, and Spike Lee's *CHI-RAQ*.

**JL REY** (Manuel) is an actor, director, and teacher who makes his TheatreSquared debut. NY/Regional Theatre: *Ybor City the Musical*, *The Life of Juanita Castro*, *The Disappearing Man*, *Boy Cometh to the Mountain*, *Kitchenette*, *Ghost Dancer*, *167 Tongues*, *The Frogs*, *In the Heights*, *La Casa Azul*, *Hamlet*, *Romeo & Juliet*, *Evita*, *The Laramie Project*, and *Waiting for Godot*. Theatre Directing Credits include: *Anna in the Tropics/Ana En El Tropic*, *4 Guys Named Jose Y Una Mujer Named Maria*, *In the Time of the Butterflies/En El Tiempo De Las Mariposas*, *The Lady from Havana*, *Sueño*, *In the Heights*, *5 Lesbians Eating a Quiche*, *Evita*, *Godspell*, *The Laramie Project*, *9 Parts of Desire*, *One Flew Over the Cuckoo's Nest*, *Kitchenette*, and *The Life of Juanita Castro*. TV/Film: 30 Rock, *The First Wives Club*, *Billions*, *Pan-American*, *The God Committee*. Look for JL in a Hertz commercial with Tom Brady.

### K CHINTHANA SOTAKOUN

(Ensemble - Lawyer) is joining TheatreSquared for the first time. Select regional credits include: Regan in *King Lear* and The Magician in *OPEN* (Tampa Rep), Mercutio in *Romeo and Juliet* (American Stage), Helena in *A Midsummer Night's Dream* and Jessica in *Hand to God* (Jobsite Theater), Snow in *Rose and the Beast* (freeFall Theatre), Maria in *Twelfth Night* (Catskill Mountain Shakespeare). Film credits include countless short films and Sophie in the feature film *Love's Playlist*. They trained in the BFA program at the University of Illinois in Urbana-Champaign. K currently studies with Richard Jewell.

### KYLIE GROOM STACY

(Ensemble - Legal Clerk) makes her TheatreSquared debut. Her credits include Caroline in *Titanic The Musical* (Lyric Theatre of Oklahoma); Swoozy in *Alexander Is Not, Not, Not*,

*Not, Not, Not Going To Move*, Mrs. Armstrong in *Best Christmas Pageant Ever*; Leslie in *Sideways Stories From Wayside School* (Trike Theatre); Georgia in *Frontier Follies*, swing for *Hits At The Hollow*, Mary in *Unto Us A Child Is Born!* (Silver Dollar City). She holds a BFA in acting and a BA in music from Oklahoma City University, as well as a Masters in Music from the University of Central Oklahoma.

### ESTEBAN ARÉVALO IBÁÑEZ

(Director) makes his TheatreSquared debut. Credits include *American Side Efectos* by Debbie Baños (The New Coordinates); *Sandusky* by Daniela Mauleón (Collaboraction); *Dreamers* by Josef Stevenson (Arc Theatre); *Thoughts on Racism...* by Sarah Illiatovich-Goldman (Encounter - Collaboraction); *People's History of The Block* by Kevin Coval (Collaboraction), *Escape Velocity* by Debbie Baños (Chicago Theatre Marathon); and *Thundersnow* (American Theatre Company). Other productions include *Invitation To A Beheading* by Vladimir Nabokov as Assistant Director and deviser (LookOut Series - Steppenwolf); *The Stranger and The Shadow* by Rough House Theatre (Adventure Stage Chicago). *The Adding Machine* (University of Arkansas), *Tango Through The Revolution* (Repertorio Español, New York), *The Dumb Waiter* (Step One Theatre), and *Our Town and Pervertimento* with Teatro Lunático (Salamanca, Spain) as a founding member and Director in several shows. He has a Spanish Major from Universidad de Salamanca and holds an MFA in Theatre Directing from the University of Arkansas.

### LISA AUTEN

(Associate Music Director/Piano/Conductor) returns to TheatreSquared having worked previously on *Matilda* as associate music director. She is an active pianist and teacher and has performed throughout the region, as well as in NYC (Carnegie Hall), Los Angeles, Chicago, and Orlando. She is on faculty as assistant professor of music (piano) at John Brown University and also works as a collaborative pianist at the University of Arkansas. Locally, she can also be

seen playing for SoNA Singers and Schola Cantorum. She previously served as music director/conductor for Arkansas Public Theatre having conducted over 50 productions. She holds a Master of Music in Collaborative Piano and Bachelor of Science in Music Education from the University of Arkansas.

**JASON BURROW** (*Music Director*) is a pianist, singer, music director, and voice teacher. Previous T2 music direction credits include *American Mariachi*, *Matilda*, *Murder for Two*, *Once*, *Fun Home*, and *Next To Normal*. He is an Associate Professor of Musical Theatre at the UA and has performed as a pianist and vocalist in venues such as Carnegie Hall, Avery Fisher Hall, Radio City Music Hall singing backup for Sting on the 68th Annual Tony Awards, and the Beacon Theatre in NYC as a member of the Broadway Inspirational Voices singing with Mariah Carey in her 2014 Christmas concerts. Jason taught in NYU's Tisch School of the Arts in the New Studio on Broadway before returning to Arkansas, his home state. Jason holds a Bachelor of Music Education degree from the University of Arkansas and Master of Music degrees from Ohio University.

**YAO CHEN** (*Costume Design*) is a costume designer and Illustrator with international design credits. Her designs have been seen in the United States, China, the Caribbean, and Costa Rica. She has been an active collaborator with Seattle Children's Theatre, Shakespeare Theatre of New Jersey, Berkshire Theatre Group, Indiana Repertory Theater, Trinity Repertory Company, Merrimack Repertory Theatre, Boston Lyric Company, White Snake Project in Boston, Contemporary American Theatre Festival, Orlando Repertory Theatre, Orlando Shakespeare Theatre, Don Gong Theatre in Beijing, China; Espresso Theatre in San Jose, Costa Rica; Cayman Culture Foundation, Cayman Island.

**BRODIE JASCH** (*Props Manager*) is the resident props master at T2, where his previous credits include *Shakespeare in Love*, *The Legend*

*of Georgia McBride*, *Every Brilliant Thing*, *The Wolves*, *Miss Bennet: Christmas at Pemberley*, *Vietgone*, *Peter and the Starcatcher*, *Around the World in 80 Days*, and 20+ other productions. His regional credits include *An Evening with Groucho* (Heritage Theater Festival); *Big Maybelle: Soul of the Blues* (Bay Street Theater); and *Unto These Hills* (Cherokee Historical Association). He holds a BA in theatrical design and technology from Castleton University.

**REBECCA KESSIN** (*Sound Design*) Favorite designs include *American Mariachi* at South Coast Repertory, *Die Mommie, Die!* for Celebration Theatre Company and CTG's *KDT Block Party*, *Priscilla! Queen of the Desert* for Celebration Theatre Company (Ovation Winner - Best Production, 2019), *This Land* for Company of Angels, *Peter Pan - The Boy Who Hated Mothers* for The Blank, and *Niagara Falls* (World Premiere) at Theatre of NOTE. Other recent credits include *Dancing Lessons* with Santa Barbara's Ensemble Theatre Company, *Good People* at Coachella Valley Rep, Born to Win, *Dream Boy* (Los Angeles Drama Critics Circle Nomination - Best Sound Design, 2017), *Bootycandy*, *The Homosexuals*, and *Revolver*, with Celebration Theatre Company, *The Antiscians*, The Apricity Project at the Edinburgh Festival Fringe 2018, *Laughter on the 23rd Floor* at The Gary Marshall Theatre, *Out of Our Father's House*, Red Compass Productions at the Edinburgh Festival Fringe 2016, *A Singular They* and *The Why* for The Blank. Rebecca is a faculty member at California State University, Fullerton, where she teaches and mentors student designers.

**MICHELLE LEBLANC** (*Choreographer*) returns to TheatreSquared. She has had the pleasure of setting choreography at T2 for *The Royale* and *At The Wedding*. She holds a MA in Dance Education from New York University.

**ATHZIRI MORALES** (*Lighting Design*) makes his TheatreSquared debut. Athziri has worked as

a Lighting designer, Costume designer and Cinematographer for both theater productions and film. Currently, Athziri is working as the Associate Artistic director for MOON Collective, an artistic collective founded in 2018 that strives to create innovative projects both in stage and film that challenge perspectives. Athziri graduated from the University of Texas at El Paso in 2020 with a Bachelor of Fine Arts in Technical Theater concentrating in Lighting Design.

**ROBIN VEST** (*Scenic Design*) In May 2021 Robin moved to Oklahoma City to join her husband who is the current Visiting Professor of Technical Direction at OCU. Prior to OKC Robin spent eight years at Guilford College in Greensboro North Carolina where she served as chair of the Theatre Studies department and associate professor. Her design work was seen locally with Triad Stage, Playmaker's Rep, UNCG, Cape Fear Regional Theatre, Brevard Music Center, and Children's Theatre of Charlotte. Outside of North Carolina, Robin's work has been seen at The Goodman, The Old Globe, Washington National Opera, Utah Opera, Vancouver Opera, Fort Worth Opera, Cleveland Playhouse, Merrimack Rep, Triad Stage, Playmaker's Rep, Barrington Stage, and Williamstown Theater Festival, Alpine Stage, and Opera House Arts. In New York she has worked with Manhattan Theater Club, Lincoln Center, Manhattan Class Company, Playwright's Horizons, Second Stage, The Cherry Lane and many others. She received her MFA from Yale School of Drama and BFA from the University of Oklahoma.

**NATHAN W. SCHEUER** (*Projection Design*) is a lighting and projection designer based in LA and NYC. He is thrilled to return to T2 after designing *Water by the Spoonful*, *Around the World in 80 Days*, *Good People*, *One Man Two Guvnors*, & *Next to Normal*. Select other credits include projections for *Oslo* (STL Rep), *Jerome Robbins' Broadway*, *Seussical* (TUTS), *Matilda*, *Gypsy*, *Wizard of Oz*, *The Unsinkable Molly*

*Brown* (The Munny), *Somnium* (Rosin Box Project), *Traffic & Weather* (ATF), *Fly* (Cap Rep), *Halcyon Days* (Oberon Theatre Ensemble), *The Evolution of Mann* (the cell), *The King in Concert*, *Sister Act* (New Theatre). Nathan has also had the pleasure of designing for Mandy Patinkin, Patti LuPone, Selena Gomez, & Alice Cooper, as well as working with Barry Manilow and Toby Keith. He's also had the pleasure of working with companies such as NYC Ballet, Paris Opera Ballet, Lincoln Center Festival, Center Theatre Group, Second Stage, and San Francisco Opera.

**EMELY ZEPEDA** (*Production Stage Manager*) is the resident production stage manager at TheatreSquared where she has stage managed *The Elaborate Entrance of Chad Deity*, *The Mountaintop*, *A Christmas Carol*, *Designing Women*, and *American Mariachi*. She previously was the resident production stage manager with Brave New World Repertory Theatre in Brooklyn, New York where she stage managed *Shakespeare on Stratford* in 2021 and 2019, *The Hook*, *A View from the Bridge*, *The Plantation*, and *Ms. Julie*, *Asian Equities*. Other select works as production stage manager include: *I Am My Own Wife* (Long Wharf Theatre), *Only Human* (St. Clement's), *Tech Support* (59E59 Theaters), *Till* (New York Musical Festival), *Zen AM* and *I Am Antigone* (Theater for the New City), *Hatefuck* (WP Theater), *Soft Butter* (Ars Nova), *Melt* (High Line), *Thunderbodies* (Soho Rep), *Ann* and *Skeleton Crew* (Dorset Theatre), *Yellow Card Red Card* (New Ohio Theatre), *Chix 6* (La MaMa), and *Cymbeline* (Yale Repertory Theatre). Emely has an MFA in stage management from the Yale School of Drama and a BA in Theatre Technical Design from Binghamton University.



## ERIN McKEOWN

**ERIN McKEOWN** is a musician, writer, and producer known internationally for their prolific disregard of stylistic boundaries. Their brash and clever electric guitar playing is something to see. Their singing voice is truly unique —clear, cool, and collected. Over the last 20 years, they have performed around the world, released 11 full length albums, and written for film, television, and theater, all the while refining their distinctive and challenging mix of American musical forms.

Erin's first musical, *Miss You Like Hell*, written with Pulitzer Prize-winning playwright Quiara Alegría Hudes, opened Off-Broadway at The Public Theater in 2018. It was nominated for 5 Drama Desk Awards, including Best Lyrics, Best Music and Best Orchestrations, and The Wall Street Journal named it Best Musical of 2018.

Leading their own band, Erin has performed at Bonnaroo, Glastonbury, and the Newport Folk Festivals. A familiar presence on NPR and the BBC, McKeown's songs have also appeared in numerous commercials and television shows.



## QUIARA ALEGRÍA HUDES

**QUIARA ALEGRÍA HUDES** is a West-Philly-born-and-bred language grrrl. Her critically-acclaimed memoir *My Broken Language* is the Free Library's One Book One Philadelphia citywide read. Her Pulitzer Prize-winning play *Water by the Spoonful*, and Pulitzer finalist play *Elliot, A Soldier's Fugue* explore the diasporican community in Philly and beyond. Hudes recently adapted her Tony Award-winning Broadway musical *In the Heights*, written with Lin-Manuel Miranda, into a major motion picture. Her essays have appeared in the Washington Post, The Nation, and most notably American Theater Magazine, where *High Tide of Heartbreak* offered a loving but intense indictment of the cost of racial and cultural segregation in the theater. With her cousin, Hudes founded and runs a prison writing project, Emancipated Stories. She now lives with her family in Washington Heights, NY (on unceded Munsee Lenape land).

# THE COMPANY

**Robert Ford**  
*Artistic Director*

**Martin Miller**  
*Executive Director*

**Amy Herzberg**  
*Associate Artistic Director*

**Shannon A. Jones**  
*General Manager*

### ADMINISTRATION

Elliott James  
Camille McCraw  
Asterilla Monteiro  
Tara Fletcher-Gibbs

*Director of Operations*  
*Human Resources Director*  
*Company & Office Manager*  
*Business Assistant*

### ARTISTIC

Dexter J. Singleton  
Rebecca Rivas

*Director of New Play Development*  
*Artistic Associate &*  
*LatinX Theatre Project Program Director*  
*CASTING Assistant*

Samantha Shane

### COMMUNITY EXPERIENCE

Tara Carr Versey  
Alyssa De La Rosa  
Kelli Humphrey  
Sarah Snyder  
Brâm Lughés  
Jasmine A. Neal  
Joe Binzer  
Jessi Ley  
Amber Holley

*Director of Community Experience*  
*Events Manager*  
*Kitchen Supervisor, The Commons*  
*Cafe Supervisor, The Commons*  
*Cafe Supervisor, The Commons*  
*Audience Services Manager*  
*Assistant Audience Services Manager*  
*Lead Concierge*  
*Lead Concierge*

### House Concierge

Tayvon Mitchell, Bella Robinson, Brenna Stone, Christian Tinoco

### The Commons Bar/Café Staff

Hunter Carmical, Eva Kemner, Jacob LeBouff, Abrianna Peyton, Lilly Robinson, Marcela Rojas-Perez, Jordan Strickland, Makerio Whitaker

### DEVELOPMENT

Corey Huffty  
Eron Huenefeld  
Elizabeth France McCue  
Chris Seawood  
Haley Zega  
Elizabeth Muscari

*Director of Development*  
*Development Coordinator*  
*Associate Director of Development*  
*Corporate & Institutional Giving Manager*  
*Development Assistant*  
*Development Assistant*

## EDUCATION

Chad Dike	<i>Director of Education</i>
Morgan Hicks	<i>Arts Engagement Director</i>
Sarah Tan	<i>Learning Programs Manager</i>
Emily Tomlinson	<i>Education Specialist</i>

## MARKETING & BOX OFFICE

Joanna Sheehan Bell	<i>Director of Marketing &amp; Communications</i>
Lara Jo Hightower	<i>Marketing Associate</i>
Cheanie Lopez-Hall	<i>Marketing Associate</i>
Andrea Newby	<i>Patron Loyalty Director</i>
Rachel Mills	<i>Ticketing &amp; Sales Director</i>
Na'Tosha De'Von	<i>Subscription Sales Specialist</i>
Kayleigh Hughes	<i>Marketing Apprentice</i>

### *Ticket Concierge Staff*

Damian Dena, Stephanie Freeman, Justin Mackey, Sierra Mitchell, Audrey Romero

## PRODUCTION

Kat Wepler	<i>Director of Production</i>
------------	-------------------------------

### SCENIC

Alex Worthington	<i>Technical Director</i>
Jamie Bray	<i>Associate Technical Director</i>
Rachel Williams	<i>Scenic Charge Artist</i>
Kyle Hoehn	<i>Production Coordinator</i>
Adam Cook	<i>Head Carpenter</i>
Bryce Kempf	<i>Scene Shop Supervisor</i>
Jerry L. Jensen	<i>Scenic Technician</i>

### COSTUMES

Ruby Kempf	<i>Costume Shop Manager &amp; Resident Designer</i>
Tanner McAlpin	<i>Costume Associate</i>
Jennifer McClory	<i>Wardrobe Supervisor</i>

### ELECTRICS

Kimberly Pukay	<i>Lighting Supervisor</i>
Emily Johnson	<i>Production Technician</i>

### AUDIO

Cameron Griffiths	<i>Sound Supervisor (incoming)</i>
Allison Williams	<i>Audio Crew</i>

## PROPERTIES

Brodie Jasch	<i>Properties Manager</i>
Emily Davis	<i>Props Assistant</i>
Sophia deGuzman	<i>Props Technician</i>

## STAGE MANAGEMENT

Emely Zepeda*	<i>Production Stage Manager</i>
---------------	---------------------------------

### *Seasonal Stage Managers*

Coda Boyce, Stephanie Collins, Ana Muñoz, Fior Tat

### *Production Assistants*

Amber Holley, Miranda Korieth

### *COVID-19 Safety Monitors*

Sarah Behrend-Wilcox, Amber Holley

## FACILITIES

Sandra Cruz	<i>Custodian</i>
-------------	------------------

## ADDITIONAL CREDITS

### CONSULTANTS & SPECIAL SERVICES

KeyboardTEK  
AlexCarr  
Jill King, Accounting  
J. Cliff McKinney, Attorney  
Porterfield and Company CPA, Audit and Tax  
Scott Zemke, IT Consultant  
Wesley Hitt, Photography  
SMART Marketing, Telesales Strategy and Support  
Adam Bernbach, Café Consultant  
Michael Bennett-Spears, Café Consultant

## BOARD OF DIRECTORS

Todd Simmons	<i>President</i>
Esther Silver-Parker	<i>Vice President</i>
Leigh Hopkins	<i>Treasurer</i>
Judy Schwab	<i>Secretary</i>

Lynn Donald Carver	Catherine Roche
Denise Garner	Marshall Saviers
Susan Hall	Andrea Wilson
Yvette Murphy-Erby	Tod Yeslow

Dear friends,

Over the past two years, even as we've cleared ever-higher hurdles to continue bringing the transformative power of intimate, live theatre to neighbors and students, ticket sales have only met 15% of expenses.

We're working hard to raise the remainder from the charitable giving of patrons like you. And thanks to an exciting \$100,000 giving challenge issued by our board and a circle of our most loyal friends, your gift this spring can have double the impact.

Will you help us meet their extraordinary challenge? You'll join this list of generous supporters, and enjoy thank-you benefits—signed posters, special events, chances to meet the artists, and behind-the-scenes access.

Can we count on you today? Together, we're creating a premier national theatre here in Northwest Arkansas. Please send your gift as soon as possible so we can move forward together.

It's an exciting path ahead, and we can't do it without you.

Gratefully,



**Todd Simmons, T2 Board President**



## INDIVIDUAL CONTRIBUTORS

These community members have given generously to support T2's work on stage and in schools, providing the margin of excellence that sets T2's work apart. *Reflects contributions received as of April 1, 2022.*

### Producers Circle

#### LEAD SEASON SPONSOR (\$50,000+)

Bob & Becky Alexander

#### SEASON SPONSOR (\$25,000+)

George & Rosemary Faucette  
Anonymous

Jane Hunt

Margaret & Dick Rutherford

In Memory of Frances Lee Scott

Barbara Shadden

Todd Simmons & Melissa Hall Simmons

#### LEAD SHOW SPONSORS (\$10,000-24,999)

Joel & Lynn Carver

Nick & Carolyn Cole

Anonymous

Tina Moore & Paul Green

Sara & Basil Parnell

Catherine & Stephan Roche

Bob & Diane Shaw

Esther Silver-Parker & Ronald Parker

The Starling Family

Tod Yeslow & Jackie Telfair

#### SHOW SPONSORS (\$5,000-9,999)

Robert & Theresa Arvin

The Belden Family

Anonymous

Dr. Jenny & Lucas Campbell

Roger Collins

Sandy Edwards

Fred & Barbara Frye

Katherine & Scott Galloway

Denise & Hershey Garner

Reed & Mary Ann Greenwood

Cynthia & Ben Guill'

Susan & Orville Hall

Leigh Hopkins

Peter & Anne Leer

David & Deborah Thomas Malone

Micky & Marybeth Mayfield

Jay & Judy McDonald

## WHY SUPPORT T2?

Just 35% of TheatreSquared's annual budget is funded by ticket sales. Your generosity allows T2 to provide:

### REMARKABLE LIVE THEATRE

In our intimate space, great theatre performances are just feet away. Each play is newly envisioned and staged for diverse audiences here in Northwest Arkansas.

### EDUCATION FOR YOUTH

More than 20,000 students experience T2's performances and residencies each year—from Fayetteville to Mena, Bentonville to Searcy, Southeast Missouri to the Arkansas Delta.

### NORTHWEST ARKANSAS' HOME FOR PROFESSIONAL THEATRE ARTISTS

T2 is one of only two professional theatre companies in the state presenting a year-round season. Artists are compensated on a national scale. Broad access to a professional theatre supports a higher quality of life for everyone working and living in Northwest Arkansas.

### 3 EASY WAYS TO MAKE YOUR GIFT

[theatre2.org/give](https://theatre2.org/give) | 479-445-6333 | P.O. Box 4188, Fayetteville, AR 72702



Hayden & Mary Joe McIlroy  
Doug & Shelley McMillon  
Ellis & Kay Melton  
Terryl & Shannon Ortego  
Jerry Perez  
Anonymous  
Doug & Barbara Prichard  
Dr. Jon C. Rubenow  
Martin Kriss Schaffer  
Bill & Judy Gregson Schwab  
Shelley Simmons  
Martha Sutherland  
William & LeAnn Underwood  
Eric Wailes & Michael Hollomon'  
Andrea & Jeremy Wilson  
John & Kitten Weiss  
Ann Marie Ziegler

#### **SUSTAINERS (\$2,500-4,999)**

Carol Barnett  
The James Burton Blair Family  
Foundation  
John & Kay DuVal  
Tim & Danna Grear  
Diane & Jim Hammons  
Malcolm & Ellen Hayward  
Marybeth & Rick Hays

Michael Hill  
Terry & Mike Johnson  
David Jolliffe & Gwynne Gertz  
Jim & Suza Jordan  
Thomas & Jill King  
Hannah & Greg Lee  
Bob & Linda McMath  
Michael & Kathy Moss  
Jennifer Leigh Niles  
Debby Nye & Catherine Lyon  
Michael O'Bryan  
Edward & Jennifer Prewitt  
Anonymous  
Drs. Andrea & Hollis Rogers  
David A. Russell  
Anonymous  
Julia Seibert & Larry Haug  
Irene & Joel Spalter  
Joyce Stafford & Jack Cole  
Jenifer Tucker  
Matthew & Heather Wolfe  
Rich & Pat Wyatt  
Brenda Yelvington

#### **GUARANTORS (\$1,500-2,499)**

John & Rebecca Babbs  
Pat & Frank Bailey  
Anonymous  
Louis & Patricia Beland  
Mary & George Benjamin  
Larry & Nancy Bittle  
Anne & Richard Booth  
Robert Burns & Cris Hamer  
Susan & Michael McCarthy  
Marc & Debbie Crandall  
Jim & Marsha Davis  
Don Deweese  
Dr. Lance & Kelly Foster  
David & Jane Gearhart  
Lyle & Sue Gohn  
Phoebe Goodwin  
Gail & Randy Goudrum  
Tom Gorsuch & Ann Hopkins  
The Gray Family  
Lowell & Kathy Grisham  
Joseph & Mary Ruth Harner  
John & Michelle Harp  
Don & Debra Harris Family  
Charitable Trust  
Donna Hekhuis

Rebecca Hurst & Jim Smith  
Bruce & Joan Johnson, in honor of  
Gage, Walker & Townes Johnson  
Becky & Terry Jones  
Charles Kelly  
The Koenig Family  
The Lehr Family  
Michael & Eileen Lieber  
Bob Mackey  
Lance & Tareneh Manning  
Jeff & Danial Marino  
Louis & Jennifer Martin  
Sabra & Bill Martin  
Keely Meyer  
Sue & David Mosley  
Yvette Murphy-Erby & Anthony  
Erby  
Marty & Kendal Powers  
Don & Kathryn Stroessner  
Barbara Taylor & Forrest Goddard  
Sidney & Mirela Vinson  
John & Teresa Whitaker  
Mike & Lee Anne Wiederkehr  
Naccaman & Angela Williams  
Carol Sue & Alan Wooten  
Mary & Jerry Yarbrough

---

#### **DIRECTOR'S CIRCLE (\$1,000-1,499)**

Gary Barrow & Carolyn Rodeffer  
Catherine W. Bass  
Melanie & Thad Beck  
Richard Anderson & John Berry  
Bickell Family  
Brett Burch & Kirk Thompson  
Cathy Case & Robert Rodweller  
Michael Cawthon & Canem Arkan  
Ernest R. & Lynn D. Coleman  
Christy Comstock  
David & Stefanie Cypher  
Dr. Katherine Darling  
Sid & Kay Davis  
Janice & Allyn Donaubauer  
John Elrod  
Elisabeth & Ben Milbank  
Jane & Matt Ewing  
Karan Freeman & Bill Elder  
Liz Fulton  
Nancy Garner & Mort Gitelman  
Kelly & Kim Hadley  
Racquel Harris  
Morris & Ann Henry  
Marie Riley & Art Hobson  
Dr. Anthony & Susan Hui  
Robert James & Joe Sidney  
Bonnie Johnson & Mike Smets  
Jim & Sue Kuczkowski  
Linda Leavell & Brooks Garner  
Rebecca Levy & Jeff Pugh  
Helen Lewis, in memory of John  
Lewis

Tonya Lundstrum  
Mandy Macke  
Terry & Christy McConnell  
Theresa & Joe Moore  
Tim & Rhonda O'Donnell  
Anonymous  
Linda A. Riley  
Bill & Markita Rogers  
Warren Rosenaur  
Ken & Celia Shireman  
Starr Foundation  
Charlotte Steele  
Garland & Julia Thorn  
Dan Worrell  
Linda L. Wray  
Aurora Zisner & Yarri Davis

#### **PLAYWRIGHTS CIRCLE (\$500-999)**

Lois Alward  
Susie Arnold & Bruce Strom  
Ayers North  
James & Stacy Bell  
Ed & Janice Bengtson  
Bob & Patty Besom  
Eileen & Bob Billig  
Debbie & Robert Blume  
Barry Wayne Bostick  
Doug Cummins & Jacquelyn  
Brandli  
Lori Bremer & Wayne Stout  
Dennis & Lorraine Brewer  
Sheri & Wayne Brooks  
Patric & Terrye Brosh

Alec Burgess  
Lianne & Adam Cairns  
Sara & Robert Caulk  
Bill & Connie Clark  
Carl Collier  
Virginia Ann Coogan  
Ron & Becky Cox  
Patrick & Janet Curth  
Bonnie Deason  
Jeannine M. Durdik  
Bill & Joyce Feldman  
Dick Ford  
Linnette & Randall Garber  
Andrew & Mary Gibbs  
Brian & Allyson Gill  
Dash C. Goff  
Laura Goodwin  
Tim & Christy Harris  
Pamela, Mark, & Mollie Hendrick  
Bob Ford & Amy Herzberg  
Shay & David Hopper  
Kathryn Hunt  
Paula V. Jenkins  
Lionel & Diana Jordan  
Bob & Linda Kelly  
Cheryl L. Kester  
Ellen Knight  
Jessie & Roger Koeppe  
Christopher & Jennifer Ladd  
Jean Lloyd Larson  
Christopher Lavagnino Charitable  
Trust  
Bo & DeDe Long  
Vernon & Shirley Lott  
Judy R. Loving

Alternative Design Manufacturing &  
Supply Inc.  
Peter MacKeith & Carol Weaver  
Richard McCormick  
Kathryn McLay  
James & Jeanette Millar  
Anonymous  
Jerry & Julie Moody  
Gary & Vicki Moore  
Darla Newman  
Jerilyn & Richard Nicholson  
Luke & Janet Parsch  
Doris Patneau & Jeff Stripling  
Dr. & Mrs. Robert Patton  
Anonymous  
Pat & Carolyn Pio  
David & Missy Pledger  
Ed & Tish Pohl  
Jay Porter  
Paul R Provost  
The Raphael Jr Family  
Mary Lynn Reese  
Robert J. & Barbara Reynolds  
Joe & Catherine Ross  
Kenton & Jennifer Ross  
David & Theresa Roth  
Katey Scott  
Berta Seitz  
Frank & Sara\* Sharp  
Mark Smidt  
John T Smith  
Tamara & Gregory Sparrow  
Kandy Stern  
Bronson & Evelyn Stilwell

Lindsey & Kyle Sullivan  
Kelly & Scott Syer  
Karen Takemoto & LeDeana  
Mullinix  
Mike & Debi Thurow  
Anonymous  
Jerre & Judith Van Hoose  
Tom & Barbara Verdery  
Brad & Lindsay Vester  
Jeannie Whayne & John  
Cook  
Patsy Wilcox  
Pattie & David Williams  
Rick & Theresa Wimpee  
Marv & Donna Wiseman  
Juana Young

### **DESIGNERS CIRCLE (\$250-499)**

Stephen & Christy Adams  
Sandra Allen  
Disa Idalia Almata  
Debbie Alsup  
James Barron  
Paul & Nancy Beahm  
Lauren Benafield  
Dick Bennett  
Jo Bennett  
Sally Benson  
Sharon Berman  
Cara Couch & Keith Berner  
Iman Blackwell  
Marlon & Ati Blackwell  
Debbie Bogner  
Ray & Brenda Boudreaux  
Anonymous  
Judy Byrd Brittenum  
Craig & Jennifer Brown  
Matt & Mary Kathryn Brown  
Paula Burks & Bill Edwards  
Ron & Kitty Burton  
Judith Carey  
Stephen & Laura Carver  
Carol Jean Chamberlain  
James B. Sawyer & Mary H.  
Charlton  
Susan Chin  
John L Colbert  
Mike & Charlotte Creech  
Lane & Stacy Crider  
Jim & Cathy Crouch  
Shari & Shirin DeSilva  
Shirin & Shari de Silva  
Sarah Diffin  
Darra Dismuke  
Bill & Deborah Doerr  
Jack & Nancy Donahoe  
Larry & Kris Driver  
James Duncan & Sharon  
Donnelly  
Alan Ellstrand & Karen Byers  
Anonymous  
James & Betty Ezell  
Christopher & Sarah Farnet  
Carey & Tim Fenton  
Gary & Laura Ferrier  
Kevin & Mary Fitzpatrick  
Sharon France, in memory  
of Edward France

Carla Crawley & Joel Freund  
Brock & Lindsey Gearhart  
Bridget Gibson  
Nan Ginger  
Patrick & Judy Goss  
Brian & Krisin Groves  
Howard & Treva Hamilton, in  
memory of Anne Hamilton  
Bud & Jan Hanks  
Chris Harris  
Marianne Hauser  
Terry & Vicki Hedden  
Megan Hill  
Alice Honea  
House Family Foundation  
Tresha Hunter  
Kaley Jarrett  
Mary Ellen Jesson  
Anonymous  
Beth Juhl & Patrick Williams  
John & Sally King  
Rich King & Sharman  
Sturchio  
Gary Kirkland & Kathy  
Spigarelli  
Benjamin Kirksey  
Morannaya Kuliink  
Priscilla Kumpe  
A. Lacey  
Sherry & Joe Lambiotte  
Jim & Diana Lewis  
Todd & Melissa Lewis  
Casey Lew-Williams  
David & Linnea Lillquist  
Barbara Lingle  
Bill & Barbara Long  
Warren Luce & Valerie Davia  
David & Sue Maddox  
Margot K. Martin  
Gary & Bonnie Martineck  
David & Jo Martinson  
Pat & Jim McClelland  
Jamey & Jessica McGaugh  
Gary & Athina McLendon  
Nicole McNabb  
D. Malcolm & Martha C.  
McNair  
Martin Miller & Lisa Margulis  
Hana & Alex Mironoff  
Kati Moore  
Andrea & Alex Newby  
Nichols Family  
Georgette J. Garner  
Ralph & Kathryn Panek  
Rev. Jim & Theresa Parrish  
Laurie Pascale  
Kathleen W. Paulson &  
George P. Paulson  
Larry & Pam Pearce  
Larry & Tommi Perkins  
Betty L Pierce  
Marshall Prettyman & Judy  
Dunleavy  
Hoyt & Mary Purvis  
Bob & Sharyl Ritschel  
Lynn Rogers  
Anonymous  
Amber & George Rozzell  
Michael & Suzanne Saltz  
Brian Saltzman

Rod & Kimberly Sanders  
Kate & Greg Schaffer  
Bridget Gibson  
Marsha Scott  
Mary Alice & Philip Serafini  
Brian & Lynn Shaw  
James & Barbara Shelton  
Shepherd Family  
Jessica Short  
Glenn Siegel  
Cindy & Dewitt Smith  
Christopher & Christa  
Spencer  
James & Penny Starkel  
Mary & Bud Storey  
William C Stribling  
Anthony Sumlin  
Rebecca Summerlin  
James Swindle  
Carole & Loyd Swope  
Jim & Lynette Terrell  
Denise & Dwayne Thomas  
Mark Tocco & Colleen  
McCarthy  
Kathleen Trotter  
Thai Trower  
Kurt & Gene Tweraser  
Robert & Nancy Umiker  
Craig & Laura Underwood  
Cory Vaughn  
Susan Vice  
Bill & Nancy Waite  
Don & Sheroll Walker  
Susan Bates Ward, in  
memory of Staci Ward  
Latriece Watkins  
Jane & David Webb  
Gary & Shea Weidner  
Chris & Deborah Weiser  
Margaret M. Whillock  
Blythe Whitehead  
Jim & Mary Katherine  
Williams  
Brent Winborn

### **ACTORS CIRCLE (\$100-249)**

Johnny & Susan Adkins  
Jennifer & Tim Alderson  
Frances D Alexander  
Carolyn Henderson Allen  
Chaz Allen & Jordan Angela  
Kate Allen  
Lucia Allen  
Anonymous  
Grace & Sam Anderson  
Karen Anderson  
John Patrick Andrews  
Kelly Anerud  
Elizabeth Auchterlonie  
Dr. Dianne & Steve Baer  
Anonymous  
Darcy Ballew  
L.D. & Patricia Barney  
Tammi Bassett  
Paul Beck & Elizabeth Hale  
Yvette & Donald Bell  
Aaron Berg  
Puja Bhattacharya  
Kathryn Birkhead

Sherry Bishop  
Carol Bobek  
Margaret Jones Bolsterli  
Katie & Jacob Boydston  
Eddie & Betty Bradford  
Andrew & Yang Branch  
Katherine & Howard Brill  
Evelyn E. Brooks  
Alicea Michelle Brown  
Ellen Bruce  
Michael & Brenda Brugger  
Roger & Mary Jane Bryles  
Dr. Mary Frances Gardner &  
Jim Buchanan  
Paul Bumpers & Leslie  
Landrum  
Mary Burke  
Robin Butler  
Anonymous  
Matt Cameron & Jennifer  
Hefler  
Anonymous  
Andrew & Dorothy Cardiel  
Scott Whiteley Carter  
The Castins  
Rita Caver, in memory of  
George Spencer  
Charles Drew Chambers  
Lindy Chambers & J. Goza  
Stephanie W Chastain  
Lewis & Jan Clark  
Sarea Clark  
Sharon & John Clark  
Anonymous  
Stephen & Cheryl Click  
Roy Clinton  
Nicole Clowney  
James Coldiron  
Linda & Dennis Collins  
Carol Cooper  
Ben Cormack & Casey  
Rector  
David & Marsha Crittenden  
Caleb Critz  
Sandy & Rhonda Crow  
Kendall Curlee & Chaim  
Goodman-Strauss  
Gaye Cypert  
Jim & Gloria Danielson  
Michael Deer  
Uni Delateja  
Xochitl Delgado-Solorzano  
Claire Dewar  
Danielle Dolphin  
Donna Dover & Ann Teague  
Susan Drouilhet  
Charlene Durtschi  
Jon & Joanie Dyer  
Tom & Dana Dykman  
Steve & Annie Edmonson  
Lisa Edmondson  
Kim Elliott  
RoAnne T Elliott  
David Erstine  
Teresa Farah  
Donald & Karolyn Farrell  
Bill & Linda Farrell  
Norma & John Farthing  
Bill & Laura Flesher  
Carol Fossey

John & Jennifer Freeman  
John & Julia Frost  
Jeff Gabbard  
Scott & Florence Galbraith  
Rogelio Garcia & Constanza  
Carrillo  
Kiersten & Byron Garibaldi  
Jim & Sue Garmon  
Richard Emmette Gathright  
Carla & Robert Gay  
Lacey Beth Gebhart  
Julia Gehrki  
Greg Gilmet & Jodie Root  
John & Tamara Gilmour  
Kathleen Glasgow Sparks  
Andy Glynn  
Daniel & Megan Godfrey  
Grimsley & Carol Graham  
Brenda & Robert Gullett  
Kenneth & Stephanie Hall  
Christine & Harold Haller  
Tyann & Mark Hamed  
Lana Hampton  
Ian & Donna Hanson  
Nancy Hanway & Cecil North  
Bob & Kathy Harriell  
Phil Harrington  
Rebecca Harris  
Becky Hart  
Rob Hart  
Robert & Nancy Hartney  
Don & Linda Hayes  
Joseph Heard  
Ted & Laurie Hellmuth  
Rod Henley  
Anonymous  
Rick Hinterthuer  
Kellie Jenkins Hohenshelt  
Holland Family  
Deniece Honeycutt  
Read & Tammy Hudson  
Teri Ann Huffaker  
Jo Ann Hughes  
Brandon Hurlbut  
Emily Ironside & Greg Leding  
Tom & Cathy January  
Teryl Hampton Jebaraj & Mervin  
Jebaraj  
Detrick Jenkins  
Julia & Jim Jensen check level!  
Neal Johnson  
Owen Johnson  
Anonymous  
James Jones  
Ramona C. Jones  
Sonya Jones & Mike Yates  
Brian & Peggy Kaney  
Kris Katrosh & Deborah Ahring  
Susan & Marvin Kay  
Kyle & Laura Kellams  
Hugh & Brenda Kincaid  
Jeanne & Brian King  
Anonymous  
Jacqueline S King  
Chloe A. Kirksey  
Pam & Greg Kiser  
Christine Lubeck-Klinger  
Peter & Judy Kohler  
Anonymous  
Valorie Kondos Field

The Konz Family  
Kathy Kress & Sam Pisciotta  
Audy Guy Lack  
Michael & Janie Landman  
David & Sandee Landsburg  
Trevor Lavy  
Suzanne & Dennis Lawler  
Maxine Germaine LeBlanc  
Amber & Michael Leister  
Beth Keck & Ken Leonard  
Annette Lynne Lewis  
Robert & Sherri Lewis  
Albena Link  
Sandra & Gary Linn  
Stephen & Victoria Linn  
Jonelle & Bryant Lipscomb  
Joan Lipsmeyer  
Annee Littell  
Lorraine Lorne  
Britton Lott  
Rhonda Lovell  
Kathryn Lowell  
Meredith Lowry  
Lisa Morgan Lutz  
Maribeth Lynes  
Clayton & Margaret Marsh  
Judith Matthews  
Frank & Jana Mayfield  
Brent & Diane McCreedy  
Brian & Elizabeth France McCue  
Jack & Mary Jane McDaniel  
Nathan & Sue McKinney  
Dennis McKinnie  
Hannah McNeill & Gary Ritter  
Dorothee Mecum  
Barbara Metzger & Holly Felix  
Anne Miller  
Frank & Eunice Millett  
Marilyn Misenhimer  
Bill & Dee Mitchell  
Enoch & Tina Moeller  
Omid & Betsy Moghadam  
Earnie & Dona Montgomery  
Chris Moody  
Anonymous  
Tom C. Morris  
Phillip Murry  
William & Jennifer Murry  
Dustin Nicholson  
Peter Nierengarten & Meredith  
Hendricks  
Anonymous  
Susan Norton  
Ron & Marsha Norvell  
Barbara Okimoto  
Becky Paneitz  
Robert Panko  
Jean & John Pappas  
Robert & Paige Hix  
Kelsie Patton  
Karen Percival  
Dennis & Linda Petersen  
Marilyn Kay Peterson  
Shelby Phelps  
Kevin & Stephanie Pierson  
Patrick & Ali Pilkington  
Ebonie Pittman  
Michael Pollock  
Jerry & Judy Pufall  
Jennifer McCloskey Quezada

Anna Regnier  
Anonymous, in memory of Bob  
Kohler  
Karl & Cecy Rice  
Joyce Richards, in honor of Sly &  
Felix Richards  
Luann Ridings  
Kevin & Michelle Rieff  
Kelly & Heather Robason  
Gregory Robert  
John & Tamara Roberts  
Shelby E Rogers  
James & Andrea Romine  
Charles & Shirley Russell  
Patti & Dennis Sanders  
Mary & Peter Savin  
Elisabeth & Chris Schach  
Mike & Cathy Schermer  
Doris A. Schuldt  
Russell & Cheryl Sharman  
Jacqueline Shearman  
Karl Shibayama & Maria Zazycki  
John & Margery Shore  
Anonymous, in honor of Pam  
Ashford  
Gloria Silver  
Jeff Slaton  
Carrie Smalling  
Curtis & Amy Smith  
Daniel & Ellen Smith  
Patricia Ann Smith  
Ronnie & Kit Smith  
Tammy & Tom Smith  
Tim & Karon Smith  
Tim & Cristy Smith  
Anonymous  
James Spencer & Susan Parks-  
Spencer, in memory of Pat  
Kellams  
Kathy Sprouse & Alan Sweitzer  
Anonymous  
Sheldon & Mallory Steinert  
Amber & Evan Stewart  
Lynn & Connie Stewart  
Mark & Judi Stillwell  
Joey Stocks  
Paul, Danica, & Benjamin Stout  
David & Jenni Taylor Swain  
Jen Sweeney  
Thelma Tarver  
Charlotte Taylor & Tim Hudson  
Laurie Telfair  
Roxanne M Theiss  
Olivia Thomas  
Sharon Thomason  
Mr. & Mrs. John Threet  
Debbie & Terry Trofholz  
Donna Trumbo  
Josef Stove Tucker  
Veronica Usery  
Terry Vaughan  
Padma Viswanathan & Geoffrey  
Brock  
Charlie & Sue Wagner  
Nika & William Waitzman  
Nancy Walker  
Lee & Linda Ward  
Suzanne & Bob Wasiluk  
Nora Welch  
Larry & Marsha West

Richard N White  
Amy & Caroline Wilbourn  
Anonymous  
Edwin & Yvette Wilkins  
Jeffrey Williams & Janet Penner-  
Williams  
Jill & Jerry Williams  
Jo & Merle Williams  
Fred A. & Janet Willis  
Victor & Monica Wilson  
Jim & Joan Wimberly  
Betty Winslow  
Carrie & Chris Wolf  
Dina Wood  
Dr. Elizabeth Ann Woods  
Michael Wright  
Connie & Greg Wuhs  
Benjamin Yeager  
Robert S. Young  
Sara & Scott Young  
Nick & Sallie Zazal



## WE MAKE THEATRE YOU MAKE IT POSSIBLE

**Please make a special gift to support  
remarkable live theatre in 2022 and beyond.**

Your caring support is the fuel that feeds our creative spark. Our 2021-22 season features the most ambitious artistic & educational programs in TheatreSquared's history. Please visit [theatre2.org/give](https://theatre2.org/give) to make your gift in support of our work on stage and in schools.

For more information, please contact:

**Corey Huffty, Director of Development**  
**479-445-6333 | [corey@theatre2.org](mailto:corey@theatre2.org)**

# COMMUNITY PARTNERS

TheatreSquared is proud to recognize the partnership of our leading business and civic sponsors, whose visionary support enables professional theatre in Northwest Arkansas today and for years to come.

## PREMIER SEASON SPONSORS \$50,000 & ABOVE



## SEASON SPONSORS \$25,000—49,999



## PRODUCTION PARTNERS \$10,000—24,999



## SHOW SPONSORS \$5,000—9,999



University of Arkansas Fulbright College of Arts and Sciences, Honors College, Division of Diversity, Equity, and Inclusion, Division of Advancement, Walton College of Business, and U of A Libraries

## PARTNERS \$1,500—4,999



## ADDITIONAL SUPPORT

Advanced Dermatology & Skin Cancer Center, PLLC | AT&T | Arkansas Community Foundation | Bank of Fayetteville | Dripping Springs Gardens | Elizabeth Barnes Casting | Enhanced Healthcare of the Ozarks | Jill King Accounting | Jones Center for Families | LeafScape | Northwest Arkansas Council | Rise Physical Therapy | Scott Zemke | Target Foundation

## MATCHING GIFTS

Excellerate Foundation | Google | Hershey Company | IBM Corporation | Pfizer Foundation Matching Gifts Program | Shell Oil Company Foundation | Tyson Foods, Inc. | Walmart Foundation

## MEDIA & MARKETING SPONSORS



## SPECIAL THANKS



TheatreSquared is proud to partner with the Department of Theatre at the University of Arkansas in providing shared resources and professional opportunities for student artists-in-training.

## CORPORATE SPONSORSHIPS

TheatreSquared remains accessible, artistically engaging, and a leader in educational outreach solely through community support. Sponsorships and corporate partnerships are the cornerstone of this support. By aligning themselves with TheatreSquared, our sponsors demonstrate their commitment to civic leadership and gain access to the theatre's unique opportunities for name and logo exposure, client entertainment, and employee rewards.

All sponsors receive year-round recognition in performance programs. TheatreSquared's partnerships are individually tailored to suit the specific priorities of each business. For more information, contact **Chris Seewood, Corporate and Institutional Giving Manager**, at **479-445-6333** or **chris@theatre2.org**.

Have guest lodging or a spare vehicle?  
**JOIN THE OPEN DOOR PATRONS PROGRAM!**

## OPEN DOOR PATRONS

By donating the use of guest lodging, vehicles and airline miles, these individuals help create a home away from home for artists visiting Northwest Arkansas. Reflects accommodations donated since May 2020.

Jeannine Durdik  
John Ervin  
Fernando Guevara  
Susan & Orville Hall  
Mike & Terry Johnson

Mark Kinion  
Jana & Frank Mayfield  
Ricky Dee Spears  
Alan Sweitzer & Kathy Sprouse

Have guest lodging, a vehicle, or airline miles to contribute? Contact **Asterilla Monteiro** at **479-777-7277** or by email at **asterilla@theatre2.org**.



# OUR NEXT STAGE

Join us with your gift to close out TheatreSquared’s ambitious commitment to a state-of-the-art home for professional theatre in our region—and help us guarantee the future of this award-winning cultural and educational anchor for decades to come.

Gifts of all sizes, pledged over three years, will ensure the vitality of this exceptional community resource. From artist’s patio bricks, to seat sponsorships, to room naming opportunities, you can help close the gap and be recognized for the next century in this remarkable cultural space—winner of the 2020 American Architecture Award, the AIA New York State Honor Award, Interior Design Best of Year Award, and the 2021 International Architecture Award.

.....

**For giving levels, continuing updates, and information on the campaign, visit [OURNEXTSTAGE.ORG](http://OURNEXTSTAGE.ORG).**

## LEADERSHIP GIFTS

WALTON FAMILY  
FOUNDATION



EXPERIENCE **FAYETTEVILLE**



**JOEL & LYNN  
CARVER**

## CENTURY CIRCLE

Bob & Becky Alexander

Ted & Leslie Belden

Old Buildings LLC/

The Inn at Carnall Hall

The James Burton Blair

Family Foundation

The Lee Bodenhamer

Family

Bob Carver Charitable

Trust

Nicholas & Carloyn Cole

Susan & Orville Hall

Thomas & Jill King

Peter & Anne Leer

Ellis & Kay Melton

Paul Green & Christina

Moore

National Endowment

for the Arts

Margaret & Dick

Rutherford

Barbara Shadden

Simmons Family

Foundation

The Starling Family

Kirk Thompson & Brett

Burch

Kenneth & Janice

Sutton &

Jenifer Tucker

John & Kitten Weiss

Tod Yeslow & Jackie

Telfair



# Our Next Stage Campaign

TheatreSquared is proud to acknowledge these contributors who have supported the campaign with gifts as of February 7, 2022.

## FOUNDERS CIRCLE

Melissa Banks Cherry  
George & Rosemary  
Faucette  
Cynthia & Ben Guill  
Leigh Hopkins  
Greg & Hannah Lee  
Bob & Linda McMath  
Scott & Shizuko Price  
Mary Lynn Reese  
Bob & Diane Shaw

## CORNERSTONE CIRCLE

George & Mary Benjamin  
Bob & Sara Caulk  
Roger Collins  
Sandy Edwards  
Frederick & Barbara Frye  
David & Jane Gearhart  
Greenwood Gearhart  
Reed & Mary Ann Greenwood  
Malcolm & Ellen Hayward  
Michael Hollomon  
& Eric Wailes  
Cheryl Kester  
Jeff & Sara Koenig  
David & Sue Mosley  
Stephen & Linda Nelson  
Doug & Barbara Prichard  
Catherine & Stephan  
Roche  
Bill & Judy Gregson  
Schwab  
Todd Simmons &  
Melissa Hall Simmons  
The Stella Boyle  
Smith Trust  
Stout Executive Search  
Barbara G. Taylor  
& Forrest D. Goddard  
Ann Marie Ziegler

## SIGNATURE GIFTS

Wade Burnside & Janet Baker  
Carol Barnett  
Eddie & Betty Bradford  
Stephen & Laura Carver  
Ben & Christine Clark  
Carl Collier  
Virginia Ann Coogan  
Cynthia Coughlin  
David & Marsha Crittenden  
Kirk & Judy Dandridge  
Dr. Katherine Darling  
Jeannine M. Durdik  
John & Kay DuVal  
Harrison & Rhonda French  
Denise & Hershey Garner  
Gail & Randy Goodrum  
Laura Goodwin  
Phoebe Goodwin  
Tim & Danna Grear  
Lowell & Kathy Grisham  
Marybeth & Rick Hays  
Morriss & Ann Henry  
Bob Ford & Amy Herzberg  
Dr. Anthony & Susan Hui  
Elliott & Megan James  
Robert James & Joe Sidney  
Terry & Mike Johnson  
David Jolliffe & Gwynne Gertz  
Jim & Suza Jordan  
The Lehr Family  
Bo & DeDe Long  
Judy R. Loving  
David & Deborah Thomas Malone  
Jeff & Danial Marino  
Jay & Judy McDonald  
Keely Meyer  
Martin Miller & Lisa Margulis  
Michael & Kathy Moss

Luke & Janet Parsch  
Anonymous  
Geetha Ramaswamy & Sam Vasani  
Patricia Relp, in memory of Roger Gross  
Frank & Sara\* Sharp  
Joyce Stafford & Jack Cole  
Don & Kathryn Stroessner  
Roy & Christine Sturgis Charitable Trust  
William & LeAnn Underwood  
Margaret M. Whillock  
Pattie & David Williams  
Jeremy & Andrea Wilson

## COMMUNITY GIFTS

Robert & Theresa Arvin  
Mina & Les Baledge  
Missy & Will Balthrope  
Richard Anderson & John Berry  
Elizabeth Boeckman  
Tori & Andrew Bogner  
Bordinos  
Hope & John Bradberry  
Patric & Terrye Brosh  
Thomas Brown  
Michael Cawthon & Canem Arkan  
Martin Cox  
Mary Margaret & Trase Cunningham  
Don Deweese  
Flintco, LLC  
Peter & Jennifer Flynn  
Dr. Lance & Kelly Foster  
The France Family  
Tom Gorsuch & Ann Hopkins  
Joseph & Mary Ruth Harner  
Holland Family  
Glen & Ann Hopkins  
Dr. Brandon A. Jackson  
Kaley Rose Jarrett  
Paula V. Jenkins

Beth Juhl & Patrick Williams  
John & Sally King  
Dawn Kohler  
Anonymous  
Bob Mackey  
Sue Lykes Maclay  
Lance & Tareneh Manning  
Charles M. Masner  
Micky & Marybeth Mayfield  
Joan Kohler McGraw  
William & Shirley McIntyre  
Leslee McVey  
Susan & Ron Neyman  
Tim & Rhonda O'Donnell  
Jeanne & Gary Olson  
Darius & Kate Osmola  
Sam & Connie Pate  
Karen Percival  
Margot & Rust Reid  
Scott, Susan, Campbell & Bunny Rogerson  
Len & Louise Schaper  
Dennis & Evelyn Shaw  
Suzette Shelmire  
Karl Shibayama & Maria Zazycki  
Esther Silver-Parker & Ronald Parker  
Shelley Simmons  
Erik & Colleen Smith  
Joey Stocks  
Martha Sutherland  
The Thaden School  
Kathleen Trotter  
Doug Wright & Terri Trotter  
C&S Wagner  
Catherine Wallack & Gregory Herman  
Elizabeth Webster  
Jeffrey Williams & Janet Penner-  
Williams  
Brent Winborn  
Dane & Michelle Workman

# SUBSCRIBE TODAY!

Experience epic, immersive plays in Northwest Arkansas's state-of-the-art new theatre.

Get a full season of live theatre to gift or enjoy yourself.

**4-play packages start at just \$99.**

Subscribers enjoy the best seats at the best prices.

**VISIT THE BOX OFFICE TODAY  
OR JOIN US AT [theatre2.org/subscribe](http://theatre2.org/subscribe)**

# 2

## NEXT ON STAGE

**BOOK AT THE BOX OFFICE**

479.777.7477

6.29 - 7.24 **FLEX**

8.24 - 9.18 **IT CAME FROM OUTER SPACE**

## THE DIFFERENCE BETWEEN A GOOD THEATRE AND A GREAT ONE IS YOU

The steadfast support of donors & friends is the difference between a good theatre and a great one.

Give today to join forces with 2,050 families who help make our work possible next year.

Thank you for making TheatreSquared great.

For more information, please contact:

**Corey Huffty, Director of Development**  
479-445-6333 | [corey@theatre2.org](mailto:corey@theatre2.org)



*Scan to donate*